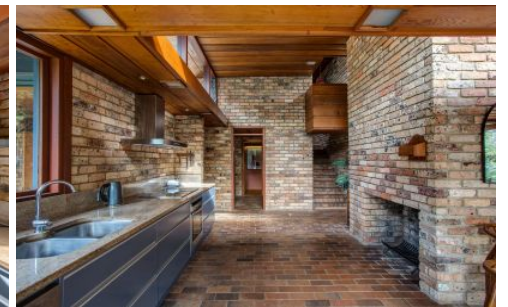
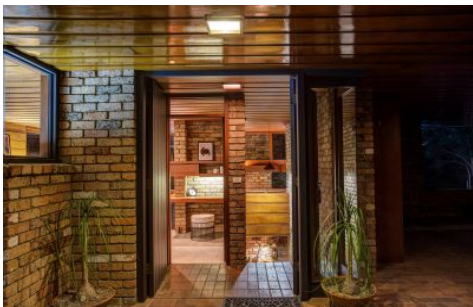




APTAKER | & ASSOCIATES



10 Kokoda Avenue Wahroonga NSW

5 3 2

Bruce Rickard's architectural masterpiece - Rickard House II

Designed by the renowned Bruce Rickard and completed in 1961, this home continues the strong legacy of his earlier works with its distinctive rustic modernist style, showcasing his ability to blend indoor and outdoor spaces seamlessly.

Rickard House II is designed to step down the site, opening up to breathtaking views. The living room is often described as one of the best in Australia, combining cosy ambience with expansive vistas. The large windows flood the interiors with natural light, creating a warm and inviting atmosphere throughout the day. The home features five spacious bedrooms and three elegant bathrooms, providing ample

[For full version visit the website](https://www.andrealestate.com.au)

**Type** : House  
**Land Size** : 1859 sqm  
**View** : <https://www.andrealestate.com.au/sale/nsw/north-shore-upper/wahroonga/residential/ho use/8038222>

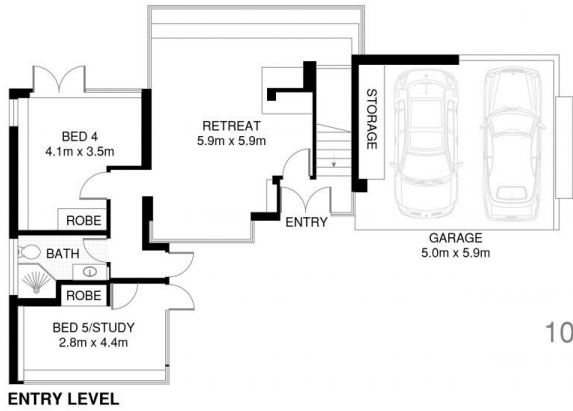


**Sash Aptaker**  
1300 263 765

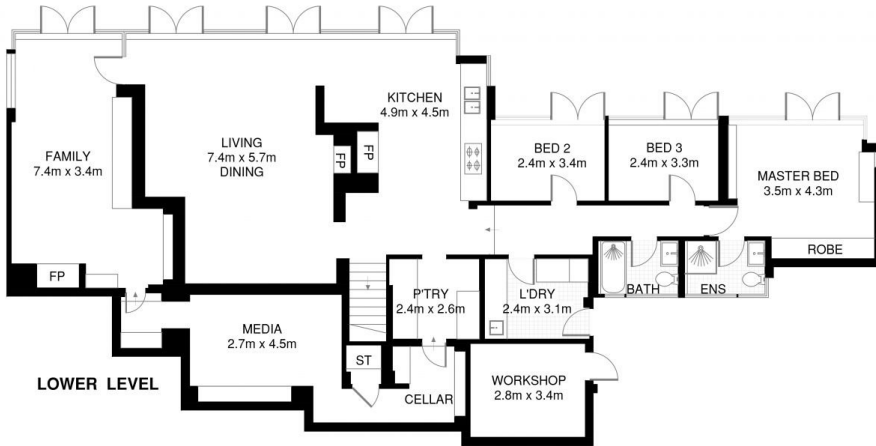
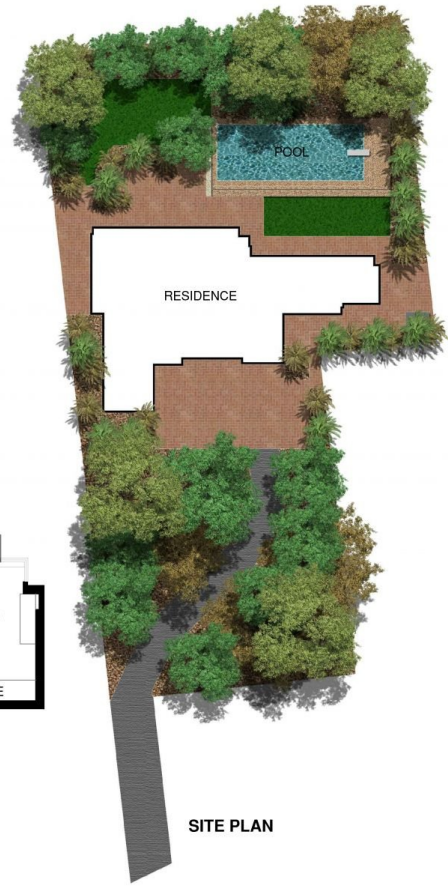


**Natalie Aptaker**  
1300 263 765

<https://www.andrealestate.com.au>



# 10 Kokoda Avenue Wahroonga



LAND SIZE APPROX. 1859m<sup>2</sup>

The site plan and floor plan are not to scale; measurements are indicative and in meters. Bushes and trees are placed for illustration purposes. Plans should not be relied on. Interested parties should make and rely on their own enquire. All other information provided has been collected from reliable sources but cannot be guaranteed for accuracy.