



APTAKER | & ASSOCIATES



27 Manor Road Hornsby NSW

4 3 2

Situated near Berowra Valley National Park and just a five-minute drive from the station, this solid double brick home is desirably located within the Hornsby North Public School zone. It showcases modern, low-maintenance living combined with a touch of tranquility in a sought-after part of Hornsby.

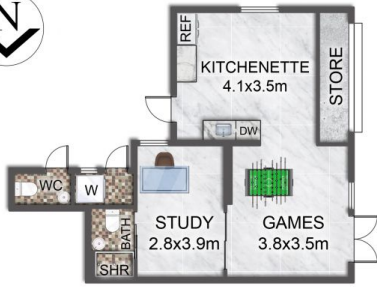
Set back behind a semi-circular driveway, this residence has been recently updated and features a versatile studio or teenager's retreat downstairs with a separate entry.

Surrounded by nature and in close vicinity to renowned walking trails through the park, this home provides a sanctuary for families wishing to find a peaceful retreat from the daily hustle, yet remains conveniently located near essentials such as shops, schools, and transport options.

Land Size : 891 sqm
View : <https://www.andrealestate.com.au/sale/nsw/north-shore-upper/hornsby/residential/house/7689846>



Sash Aptaker
1300 263 765



LOWER GROUND FLOOR PLAN



GROUND FLOOR PLAN



SITE PLAN

This floor plan including furniture, fixture measurements and dimensions are approximate and for illustrative purposes only. BoxBrownie.com gives no guarantee, warranty or representation as to the accuracy and layout. All enquiries must be directed to the agent, vendor or party representing this floor plan.

27 Manor Rd, Hornsby